



不锈钢制快速接头

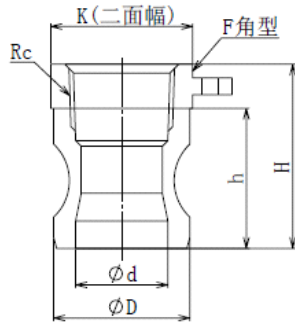
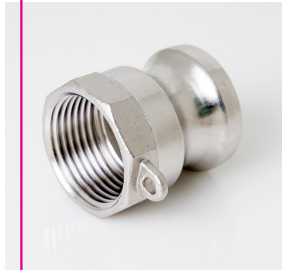
レバーカップステンレス製
STAINLESS QUICK COUPLIG





A型

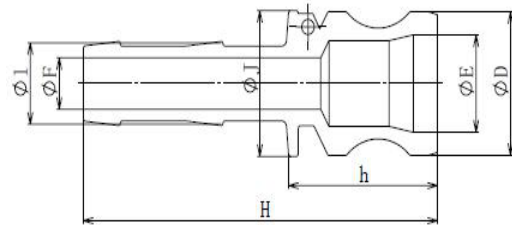
A型 W-KSA



呼び径		ΦD	Φd	H	h	K
Type	径					
W-KSA	3/4	32.0	21.0	41.0	31.0	34.0
	1`	37.0	24.0	49.0	36.0	41.0
	1`1/4	45.0	29.0	55.0	39.5	48.0
	1`1/2	53.0	35.0	58.0	42.0	56.0
	2`	63.5	45.0	65.0	50.0	67.0
	2`1/2	76.0	56.0	87.0	68.0	84.0
	3`	91.5	71.0	73.0	53.0	96.0
	4`	120.0	99.0	78.0	54.0	127.0

E型

E型 W-KSE

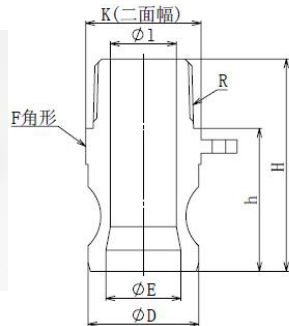


呼び径		ΦD	ΦE	ΦF	H	h	ΦI	ΦJ
Type	径							
W-KSE	3/4	32.0	21.0	14.0	93.0	42.0	20.3	33.0
	1`	37.0	24.0	21.0	107.0	47.0	27.0	39.0
	1`1/4	45.0	29.0	28.0	114.5	50.5	32.9	48.0
	1`1/2	53.0	35.0	33.5	120.0	54.0	40.0	56.0
	2`	63.5	45.0	46.0	140.0	63.0	53.0	68.5
	2`1/2	76.0	56.0	55.0	161.0	65.0	67.0	81.0
	3`	91.5	71.0	67.0	172.0	68.0	78.5	102.0
	4`	120.0	99.0	94.0	185.0	71.0	103.0	133.0



F型

W-KSF



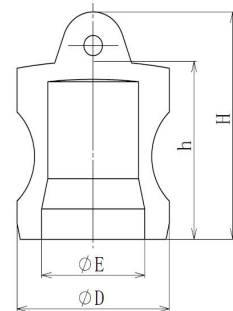
呼び径		φD	φE	φI	H	h	K
Type	R(PT)						
W-KSA	3/4	32.0	21.0	21.0	58.0	38.3	32
	1`	37.0	24.0	24.0	70.0	47.5	40
	1` 1/4	45.0	29.0	29.0	79.5	55.0	47.5
	1` 1/2	53.0	35.0	35.0	83.0	58.7	55
	2`	63.5	45.0	45.0	88.0	62.0	66
	2` 1/2	76.0	56.0	56.0	100.0	70.0	84
	3`	91.5	71.0	71.0	106.0	73.0	96
	4`	120.0	99.0	99.0	114	78	127



D P型

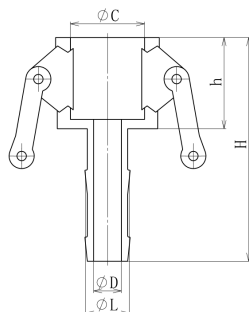
W-KSDP

呼び径		φD	φE	H	h
Type	径				
W-KSDP	3/4	32.0	21.0	37.0	28
	1`	37.0	24.0	45.0	33
	1` 1/4	45.0	29.0	54.0	40
	1` 1/2	53.0	35.0	59.0	43
	2`	63.5	45.0	66.0	46
	2` 1/2	76.0	56.0	73.0	51
	3`	91.5	71.0	76.0	52
	4`	120.0	99.0	83.0	56



C型

W-KSC

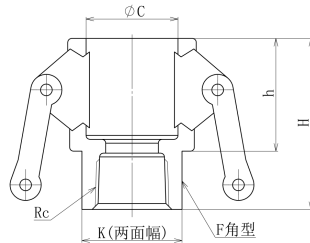


呼び径		φC	φD	φL	H	h
Type	径					
W-KSC	3/4	33.0	14.0	20.3	83.0	32
	1`	38.0	21.0	27.0	100.0	40.0
	1` 1/4	46.0	28.0	32.9	111.0	47.0
	1` 1/2	54.4	33.5	40.0	114.0	48.0
	2`	64.5	46.0	53.0	132.0	55.0
	2` 1/2	77.0	56.0	67.0	153.0	57.0
	3`	92.5	66.5	78.5	163.0	59.0
	4`	120.0	93.0	103.0	176.0	62.0



D型

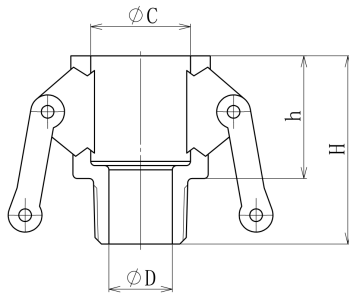
W-KSD



呼び径		ΦC	h	H	K
Type	径				
	3/4	33.0	32.0	53.0	32
	1`	38.0	40.0	64.0	40
	1` 1/4	46.0	47.0	69.0	48
	1` 1/2	54.4	48.0	71.0	56
	2`	64.5	55.0	79.0	67
	2` 1/2	77.0	57.0	83.0	84
	3`	92.5	59.0	90.0	97
	4`	120.0	62.0	96.0	127

B型

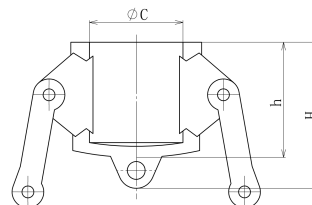
W-KSB



呼び径		ΦC	ΦD	H	h
Type	R(PT)				
	3/4	33.0	19.0	53.0	32.0
	1`	38.0	24.0	64.0	40.0
	1` 1/4	46.0	29.0	73.0	47.0
	1` 1/2	54.4	35.0	74.0	48.0
	2`	64.5	45.0	81.0	55.0
	2` 1/2	77.0	56.0	88.0	57.0
	3`	92.5	71.0	92.0	59.0
	4`	120.0	99.0	98.0	62.0

D C型

W-KSDC



呼び径		ΦC	H	h
Type	型式			
	3/4	33.0	42.7	34.0
	1`	38.0	52.0	39.2
	1` 1/4	46.0	63.7	48.0
	1` 1/2	54.4	65.5	50.0
	2`	64.5	78.3	57.0
	2` 1/2	77.0	82.0	62.0
	3`	92.5	88.0	64.0
	4`	120.0	91.0	67.0