



配管资材与其他非标定制品

その他

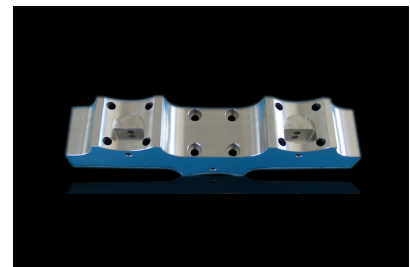
OTHER FITTINGS



配管资材



其他非标定制品



若松可以依据客户的图纸或样品生产各类管件！欢迎随时来电！
お問い合わせ，ご訪問を心よりお待ちしております。



常用不锈钢化学成份表
(CHEMICAL COMPOSITION TABLE FOR COMMON STAINLESS STEEL)

化学成份 (%) Chemical composition									
		C	Si	Mn	P	S	Ni	Cr	Mo
ASTM	TP304	≤0.08	≤1.00	≤2.00	≤0.045	≤0.03	8.00 ~ 11.00	18.00 ~ 20.00	
	TP304L	≤0.035	≤1.00	≤2.00	≤0.045	≤0.03	8.00 ~ 13.00	18.00 ~ 20.00	
	TP316	≤0.08	≤1.00	≤2.00	≤0.045	≤0.03	10.00 ~ 14.00	16.00 ~ 18.00	2.00 ~ 3.00
	TP316L	≤0.035	≤1.00	≤2.00	≤0.045	≤0.03	10.00 ~ 14.00	16.00 ~ 18.00	2.00 ~ 3.00
JIS	SUS304	≤0.08	≤1.00	≤2.00	≤0.040	≤0.03	8.00 ~ 11.00	18.00 ~ 20.00	
	SUS304L	≤0.03	≤1.00	≤2.00	≤0.040	≤0.03	8.00 ~ 13.00	18.00 ~ 20.00	
	SUS316	≤0.08	≤1.00	≤2.00	≤0.040	≤0.03	10.00 ~ 14.00	16.00 ~ 18.00	2.00 ~ 3.00
	SUS316L	≤0.03	≤1.00	≤2.00	≤0.040	≤0.03	12.00 ~ 16.00	16.00 ~ 18.00	2.00 ~ 3.00
GB	Ocr18Ni9	≤0.07	≤1.00	≤2.00	≤0.035	≤0.03	8.00 ~ 11.00	17.00 ~ 19.00	
	OOCr19Ni10	≤0.03	≤1.00	≤2.00	≤0.035	≤0.03	8.00 ~ 12.00	18.00 ~ 20.00	
	Ocr17Ni12Mo2	≤0.07	≤1.00	≤2.00	≤0.035	≤0.03	10.00 ~ 14.00	16.00 ~ 18.00	2.00 ~ 3.00
	OOCr17Ni14Mo2	≤0.03	≤1.00	≤2.00	≤0.035	≤0.03	12.00 ~ 15.00	16.00 ~ 18.00	2.00 ~ 3.00
GB (新牌号)	06Cr19Ni10	≤0.08	≤0.75	≤2.00	≤0.040	≤0.030	8.00 ~ 11.00	18.00 ~ 20.00	
	022Cr19Ni10	≤0.030	≤0.75	≤2.00	≤0.040	≤0.030	8.00 ~ 12.00	18.00 ~ 20.00	
	06Cr17Ni12Mo2	≤0.08	≤0.75	≤2.00	≤0.040	≤0.030	10.00 ~ 14.00	16.00 ~ 18.00	2.00 ~ 3.00
	022Cr17Ni12Mo2	≤0.030	≤0.75	≤2.00	≤0.040	≤0.030	10.00 ~ 14.00	16.00 ~ 18.00	2.00 ~ 3.00
EN10217-7	1.4301	≤0.07	≤1.00	≤2.00	≤0.045	≤0.015	8.00 ~ 10.50	17.00 ~ 19.50	
	1.4307	≤0.03	≤1.00	≤2.00	≤0.045	≤0.015	8.00 ~ 10.00	17.50 ~ 19.50	
	1.4401	≤0.07	≤1.00	≤2.00	≤0.045	≤0.015	10.00 ~ 13.00	16.50 ~ 18.50	2.00 ~ 2.50
	1.4404	≤0.03	≤1.00	≤2.00	≤0.045	≤0.015	10.00 ~ 13.00	16.50 ~ 18.50	2.00 ~ 2.50

常用不锈钢的机械性能
(MECHANICAL PROPERTY FOR COMMON STAINLESS STEEL)

钢种		机械性质 Mechanical properties			
		抗拉强度	屈服强度	伸长率	硬度
Grade		Tensile strength	Yield strength	Elongation	Hardness
		KSi(MPa)	KSi(MPa)	%	HRB
ASTM	TP304	≥ 75(515)	≥ 30(205)	≥ 35	≤ 90
	TP304L	≥ 70(483)	≥ 25(170)	≥ 35	≤ 90
	TP316	≥ 75(515)	≥ 30(205)	≥ 35	≤ 90
	TP316L	≥ 70(483)	≥ 25(170)	≥ 35	≤ 90
JIS	SUS304	≥ 75(520)	≥ 30(206)	≥ 35	≤ 90
	SUS304L	≥ 70(481)	≥ 25(177)	≥ 35	≤ 90
	SUS316	≥ 75(520)	≥ 30(206)	≥ 35	≤ 90
	SUS316L	≥ 70(481)	≥ 25(177)	≥ 35	≤ 90
GB	Ocr18Ni9	≥ 75(520)	≥ 30(210)	≥ 35	≤ 90
	OOCr19Ni10	≥ 70(480)	≥ 25(180)	≥ 35	≤ 90
	Ocr17Ni12Mo2	≥ 75(520)	≥ 30(210)	≥ 35	≤ 90
	OOCr17Ni14Mo2	≥ 70(480)	≥ 25(180)	≥ 35	≤ 90
EN10217-7	1.4301	(500 ~ 700)	≥ (195)	≥ 40b	≤ 90
	1.4307	(470 ~ 670)	≥ (180)	≥ 40b	≤ 90
	1.4401	(510 ~ 710)	≥ (205)	≥ 40b	≤ 90
	1.4404	(490 ~ 690)	≥ (190)	≥ 40b	≤ 90

材料的化学成份和力学指标会因为某项条件的规定而有所改变，使用时请查阅原标准。
The index of material chemical composition and mechanical properties shall change as to some defined condition, and please refer to the original standard.



GB/T 12459、GB/T13401
外径和壁厚表 OUTSIDE DIAMETER AND WALL THICKNESS

公称通径 Nominal Diameter	外径 Qutside Diaeter D		壁厚 Mominal Wall Thickness T																	
			DN	A	B	Sch5S	Sch10S	Sch20S	LG	Sch20	Sch30	Std	Sch40	Sch60	XS	Sch80	Sch100	Sch120	Sch140	Sch160
			15	21.3	18	1.6	2.1	2.6	--	--	--	--	2.9	--	--	3.6	--	--	--	4.5
20	26.9	25	1.6	2.1	2.6	--	--	--	--	2.9	--	--	4.0	--	--	--	5.6			
25	33.7	32	1.6	2.8	3.2	--	--	--	--	3.2	--	--	4.5	--	--	--	6.3			
32	42.4	38	1.6	2.8	3.2	--	--	--	--	3.6	--	--	5.0	--	--	--	6.3			
40	48.3	45	1.6	2.8	3.2	--	--	--	--	3.6	--	--	5.0	--	--	--	7.1			
50	60.3	57	1.6	2.8	3.6	--	3.2	--	--	4.0	--	--	5.6	--	--	--	8.8			
65	73	76	2.0	3.0	3.6	--	4.5	--	--	5.0	--	--	7.1	--	--	--	10.0			
80	88.9	89	2.0	3.0	4.0	--	4.5	--	--	5.6	--	--	8.0	--	--	--	11.0			
90	101.6	--	2.0	3.0	4.0	--	4.5	--	--	5.6	--	--	8.0	--	--	--	12.5			
100	114.3	108	2.0	3.0	4.0	--	5.0	--	--	5.9	--	--	8.8	--	11.0	--	14.2			
125	141.3	133	2.9	3.4	5.0	--	5.0	--	--	6.3	--	--	10.0	--	12.5	--	16.0			
150	168.3	159	2.9	3.4	5.0	--	5.6	--	--	7.1	--	--	11.0	--	14.2	--	17.5			
200	219.1	219	2.9	4.0	6.3	--	6.3	7.1	--	8.0	10.0	--	12.5	16.0	17.5	20.0	22.2			
250	273	273	3.6	4.0	6.3	--	6.3	8.0	--	8.8	12.5	--	16.0	17.5	22.2	25.0	28.0			
300	323.9	325	4.0	4.5	6.3	--	6.3	8.8	--	10.0	14.2	--	17.5	22.2	25.0	28.0	32.0			
350	355.6	377	4.0	5.0	--	8.0	8.0	10.0	10.0	11.0	16.0	13.0	20.0	25.8	28.0	32.0	36.0			
400	406.4	426	4.0	5.0	--	8.0	8.0	10.0	10.0	12.5	17.5	13.0	22.2	28.0	30.0	36.0	40.0			
450	457	480	4.0	5.0	--	8.0	8.0	11.0	10.0	14.2	20.0	13.0	25.0	30.0	36.0	40.0	45.0			
500	508.0	530	5.0	5.6	--	8.0	10.0	12.5	10.0	16.0	20.0	13.0	28.0	32.0	40.0	45.0	50.0			
550	559	--	5.0	5.6	--	8.0	--	--	10.0	--	--	13.0	13.0	--	--	--	--			
600	610	630	5.6	6.3	--	8.0	--	--	10.0	17.5	--	13.0	32.0	--	--	--	--			

Sch5S、10S、20S用于不锈钢管件。Sch5S、10S、20S、 Applies for stainless steel fittings.



JIS B2311、B2312、B2313
外径和壁厚表 OUTSIDE DIAMETER AND WALL THICKNESS

公称通径 Nominal Diameter		外径 Outside Diaeter	壁厚 Mominal Wall Thickness T																	
DN	NPS	D	SGP	Sch5S	Sch10S	Sch10	Sch20S	Sch30	Sch40S	Std	Sch40	Sch60	Sch80S	XS	Sch80	Sch100	Sch120	Sch140	Sch160	XXS
15	1/2	21.7	2.8	1.7	2.1	--	2.5	--	2.8	2.8	2.8	--	3.7	3.7	3.7	--	--	--	4.8	7.5
20	3/4	27.2	2.8	1.7	2.1	--	2.5	--	2.9	2.9	2.9	--	3.9	3.9	3.9	--	--	--	5.6	7.8
25	1	34.0	3.2	1.7	2.8	--	3.0	--	3.4	3.4	3.4	--	4.5	4.5	4.5	--	--	--	6.4	9.1
32	1 1/4	42.7	3.5	1.7	2.8	--	3.0	--	3.6	3.6	3.6	--	4.9	4.9	4.9	--	--	--	6.4	9.7
40	1 1/2	48.6	3.5	1.7	2.8	--	3.0	--	3.7	3.7	3.7	--	5.1	5.1	5.1	--	--	--	7.1	10.2
50	2	60.5	3.8	1.7	2.8	--	3.5	--	3.9	3.9	3.9	--	5.5	5.5	5.5	--	--	--	8.7	11.1
65	2 1/2	76.3	4.2	2.1	3.0	--	3.5	--	5.2	5.2	5.2	--	7.0	7.0	7.0	--	--	--	9.5	14.0
80	3	89.1	4.2	2.1	3.0	--	4.0	--	5.5	5.5	5.5	--	7.6	7.6	7.6	--	--	--	11.1	15.2
90	3 1/2	101.6	4.2	2.1	3.0	--	4.0	--	5.7	5.7	5.7	--	8.1	8.1	8.1	--	--	--	--	--
100	4	114.3	4.5	2.1	3.0	--	4.0	--	6.0	6.0	6.0	--	8.6	8.6	8.6	--	11.1	--	13.5	17.1
125	5	139.8	4.5	2.8	3.4	--	5.0	--	6.6	6.6	6.6	--	9.5	9.5	9.5	--	12.7	--	15.9	19.0
150	6	165.2	5.0	2.8	3.4	--	5.0	--	7.1	7.1	7.1	--	11.0	11.0	11.0	--	14.3	--	18.2	21.9
200	8	216.3	5.8	2.8	4.0	--	6.5	7.0	8.2	8.2	8.2	10.3	12.7	12.7	12.7	15.1	18.2	20.6	23.0	22.2
250	10	267.4	6.6	3.4	4.0	--	6.5	7.8	9.3	9.3	9.3	12.7	12.7	12.7	15.1	18.3	21.4	25.4	28.6	25.4
300	12	318.5	6.9	4.0	4.5	--	6.5	8.4	9.5	9.5	10.3	14.3	12.7	12.7	17.4	21.4	25.4	28.6	33.3	25.4
350	14	355.6	7.9	4.0	5.0	6.4	8.0	9.5	9.5	9.5	11.1	15.1	--	12.7	19.0	23.8	27.8	31.8	35.7	--
400	16	406.4	7.9	4.5	5.0	6.4	8.0	9.5	9.5	9.5	12.1	16.7	--	12.7	21.4	26.2	30.9	36.5	40.5	--
450	18	457.2	7.9	4.5	5.0	6.4	8.0	11.1	9.5	9.5	14.3	19.0	--	12.7	23.8	29.4	34.9	39.7	45.2	--
500	20	508.0	7.9	5.0	5.5	6.4	9.5	12.7	9.5	9.5	15.1	20.6	--	12.7	26.2	32.5	38.1	44.4	50.0	--
550	22	558.6	--	5.0	5.5	6.4	9.5	12.7	9.5	9.5	15.9	22.2	--	12.7	28.6	34.9	41.3	47.6	54.0	--
600	24	609.6	--	5.5	6.5	6.4	9.5	14.3	9.5	9.5	17.5	24.6	--	12.7	31.0	38.9	46.0	52.4	59.5	--

壁厚表后带S者仅适用于奥氏体不锈钢管件。此表是SH3408标准中无缝管件的公称壁厚；SH3408标准中钢板制管件的壁厚直接用毫米给出。

Schedule with the suffix "S" only applies for Austenitic stainless steel fittings. This is applies for the nominal schedule of seamless steel fittings for SH3408 standard; the schedule of wrought steel fittings for SH3408 standard uses the millimeter system.



ASME/ANSI B36.10M、B36、19M
外径和壁厚表 OUTSIDE DIAMETER AND WALL THICKNESS

公称通径 Nominal Diameter		外径 Outside Diameter	壁厚 Nominal Wall Thickness T																
DN	NPS	D	Sch5S	Sch10S	Sch10	Sch20	Sch30	Sch40S	Std	Sch40	Sch60	Sch80S	XS	Sch80	Sch100	Sch120	Sch140	Sch160	XXS
6	1/8	10.3	--	1.24	--	--	--	1.73	1.73	1.73	--	2.41	2.41	2.41	--	--	--	--	--
8	1/4	13.7	--	1.65	--	--	--	2.24	2.24	2.24	--	3.02	3.02	3.02	--	--	--	--	--
10	3/8	17.1	--	1.65	--	--	--	2.31	2.31	2.31	--	3.20	3.20	3.20	--	--	--	--	--
15	1/2	21.3	1.65	2.11	--	--	--	2.77	2.77	2.77	--	3.73	3.73	3.73	--	--	--	4.78	7.47
20	3/4	26.7	1.65	2.11	--	--	--	2.87	2.87	2.87	--	3.91	3.91	3.91	--	--	--	5.56	7.82
25	1	33.4	1.65	2.77	--	--	--	3.38	3.38	3.38	--	4.55	4.55	4.55	--	--	--	6.35	9.09
32	1 1/4	42.2	1.65	2.77	--	--	--	3.56	3.56	3.56	--	4.85	4.85	4.85	--	--	--	6.35	9.70
40	1 1/2	48.3	1.65	2.77	--	--	--	3.68	3.68	3.68	--	5.08	5.08	5.08	--	--	--	7.14	10.15
50	2	60.3	1.65	2.77	--	--	--	3.91	3.91	3.91	--	5.54	5.54	5.54	--	--	--	8.74	11.07
65	2 1/2	73.0	2.11	3.05	--	--	--	5.16	5.16	5.16	--	7.01	7.01	7.01	--	--	--	9.53	14.02
80	3	88.9	2.11	3.05	--	--	--	5.49	5.49	5.49	--	7.62	7.62	7.62	--	--	--	11.13	15.24
90	3 1/2	101.6	2.11	3.05	--	--	--	5.74	5.74	5.74	--	8.08	8.08	8.08	--	--	--	--	--
100	4	114.3	2.11	3.05	--	--	--	6.02	6.02	6.02	--	8.56	8.56	8.56	--	11.13	--	13.49	17.12
125	5	141.3	2.77	3.40	--	--	--	6.55	6.55	6.55	--	9.53	9.53	9.53	--	12.70	--	15.88	19.05
150	6	168.3	2.77	3.40	--	--	--	7.11	7.11	7.11	--	10.97	10.97	10.97	--	14.27	--	18.26	21.95
200	8	219.1	2.77	3.76	--	6.35	7.04	8.18	8.18	8.18	10.31	12.70	12.70	12.70	15.59	18.26	20.62	23.01	22.23
250	10	273.1	3.40	4.19	--	6.35	7.80	9.27	9.27	9.27	12.70	12.70	12.70	15.09	18.26	21.44	25.40	28.58	25.40
300	12	323.9	3.96	4.57	--	6.35	8.38	9.53	9.53	10.31	14.27	12.70	12.70	17.48	21.44	25.40	28.58	33.32	25.40
350	14	355.6	3.96	4.78	6.35	7.92	9.53	--	9.53	11.13	15.09	--	12.70	19.05	23.83	27.79	31.75	35.71	--
400	16	406.4	4.19	4.78	6.35	7.92	9.53	--	9.53	12.70	16.66	--	12.70	21.44	26.19	30.96	36.53	40.29	--
450	18	457.2	4.19	4.78	6.35	7.92	11.13	--	9.53	14.27	19.05	--	12.70	23.83	29.36	34.93	39.67	45.24	--
500	20	508	4.78	5.54	6.35	9.53	12.70	--	9.53	15.09	20.62	--	12.70	26.19	32.54	38.10	44.45	50.01	--
550	22	559	4.78	5.54	6.35	9.53	12.70	--	9.53	--	22.23	--	12.70	28.58	34.93	41.28	47.63	53.98	--
600	24	610	5.54	6.35	6.35	9.53	14.27	--	9.53	17.48	24.61	--	12.70	30.96	38.89	46.02	52.37	59.54	--

Sch5S、10S、20S用于不锈钢管件，Sch5S、10S、20S Applies for stainless steel fittings



压力换算表

MPa→ kgf / cm²

(1MPa=10.19716kg/cm²)

0. 1~ 5. 0		5. 1~ 10. 0		10. 5~ 35. 0		35. 5~ 60. 0		60. 5~ 85. 0	
Mpa	kgf/cm ²	Mpa	kgf/cm ²	Mpa	kgf/cm ²	Mpa	kgf/cm ²	Mpa	kgf/cm ²
0.1	1.0197	5.1	52.006	10.5	107.07	35.5	362.00	60.5	616.93
0.2	2.0394	5.2	53.025	11.0	112.17	36.0	367.10	61.0	622.03
0.3	3.0591	5.3	54.045	11.5	117.27	36.5	372.20	61.5	627.13
0.4	4.0789	5.4	55.065	12.0	122.37	37.0	377.29	62.0	632.22
0.5	5.0986	5.5	56.084	12.5	127.46	37.5	382.39	62.5	637.32
0.6	6.1183	5.6	57.104	13.0	132.56	38.0	387.49	63.0	642.42
0.7	7.1380	5.7	58.124	13.5	137.66	38.5	392.59	63.5	647.52
0.8	8.1577	5.8	59.144	14.0	142.76	39.0	397.69	64.0	652.62
0.9	9.1774	5.9	60.163	14.5	147.86	39.5	402.79	64.5	657.72
1.0	10.197	6.0	61.183	15.0	152.96	40.0	407.89	65.0	662.82
1.1	11.217	6.1	62.203	15.5	158.06	40.5	412.98	65.5	667.91
1.2	12.237	6.2	63.222	16.0	163.15	41.0	418.08	66.0	673.01
1.3	13.256	6.3	64.242	16.5	168.25	41.5	423.18	66.5	678.11
1.4	14.276	6.4	65.262	17.0	173.35	42.0	428.28	67.0	683.21
1.5	15.296	6.5	66.282	17.5	178.45	42.5	433.38	67.5	688.31
1.6	16.315	6.6	67.301	18.0	183.55	43.0	438.48	68.0	693.41
1.7	17.335	6.7	68.321	18.5	188.65	43.5	443.58	68.5	698.51
1.8	18.355	6.8	69.341	19.0	193.75	44.0	448.68	69.0	703.60
1.9	19.375	6.9	70.360	19.5	198.84	44.5	453.77	69.5	708.70
2.0	20.394	7.0	71.380	20.0	203.94	45.0	458.87	70.0	713.80
2.1	21.414	7.1	72.400	20.5	209.04	45.5	463.97	70.5	718.90
2.2	22.434	7.2	73.420	21.0	214.14	46.0	469.07	71.0	724.00
2.3	23.453	7.3	74.439	21.5	219.24	46.5	474.17	71.5	729.10
2.4	24.473	7.4	75.459	22.0	224.34	47.0	479.27	72.0	734.20
2.5	25.493	7.5	76.479	22.5	229.44	47.5	484.37	72.5	739.29
2.6	26.513	7.6	77.498	23.0	234.53	48.0	489.46	73.0	744.39
2.7	27.532	7.7	78.518	23.5	239.63	48.5	494.56	73.5	749.49
2.8	28.552	7.8	79.538	24.0	244.73	49.0	499.66	74.0	754.59
2.9	29.572	7.9	80.558	24.5	249.83	49.5	504.76	74.5	759.69
3.0	30.591	8.0	81.577	25.0	254.93	50.0	509.86	75.0	764.79
3.1	31.611	8.1	82.597	25.5	260.03	50.5	514.96	75.5	769.89
3.2	32.631	8.2	83.617	26.0	265.13	51.0	520.06	76.0	774.98
3.3	33.651	8.3	84.636	26.5	270.22	51.5	525.15	76.5	780.08
3.4	34.670	8.4	85.656	27.0	275.32	52.0	530.25	77.0	785.18
3.5	35.690	8.5	86.676	27.5	280.42	52.5	535.35	77.5	790.28
3.6	36.710	8.6	87.696	28.0	285.52	53.0	540.45	78.0	795.38
3.7	37.729	8.7	88.715	28.5	290.62	53.5	545.55	78.5	800.48
3.8	38.749	8.8	89.735	29.0	295.72	54.0	550.65	79.0	805.58
3.9	39.769	8.9	90.755	29.5	300.82	54.5	555.75	79.5	810.67
4.0	40.789	9.0	91.774	30.0	305.91	55.0	560.84	80.0	815.77
4.1	41.808	9.1	92.794	30.5	311.01	55.5	565.94	80.5	820.87
4.2	42.828	9.2	93.814	31.0	316.11	56.0	571.04	81.0	825.97
4.3	43.848	9.3	94.834	31.5	321.21	56.5	576.14	81.5	831.07
4.4	44.868	9.4	95.853	32.0	326.31	57.0	581.24	82.0	836.17
4.5	45.887	9.5	96.873	32.5	331.41	57.5	586.34	82.5	841.27
4.6	46.907	9.6	97.892	33.0	336.51	58.0	591.44	83.0	846.36
4.7	47.927	9.7	98.912	33.5	341.60	58.5	596.53	83.5	851.46
4.8	48.946	9.8	99.932	34.0	346.70	59.0	601.63	84.0	856.56
4.9	49.966	9.9	100.95	34.5	351.80	59.5	606.73	84.5	861.66
5.0	50.986	10.0	101.97	35.0	356.90	60.0	611.83	85.0	866.76



压力换算表

$\text{lb/in}^2 \rightarrow \text{kgf/cm}^2$
($1\text{lb/in}^2=0.070307\text{kgf/cm}^2$)

1 ~ 50		51 ~ 100		105 ~ 400		410 ~ 900		910 ~ 1700	
lb/in ²	kgf/cm ²	lb/in ²	kgf/cm ²	lb/in ²	kgf/cm ²	lb/in ²	kgf/cm ²	lb/in ²	kgf/cm ²
1	0.07	51	3.59	105	7.38	410	28.83	910	63.98
2	0.14	52	3.66	110	7.73	420	29.53	920	64.68
3	0.21	53	3.73	115	8.09	430	30.23	930	65.39
4	0.28	54	3.80	120	8.44	440	30.93	940	66.09
5	0.35	55	3.87	125	8.79	450	31.64	950	66.79
6	0.42	56	3.94	130	9.14	460	32.34	960	67.49
7	0.49	57	4.01	135	9.49	470	33.04	970	68.20
8	0.56	58	4.08	140	9.84	480	33.75	980	68.90
9	0.63	59	4.15	145	10.19	490	34.45	990	69.60
10	0.70	60	4.22	150	10.55	500	35.15	1000	70.31
11	0.77	61	4.29	155	10.90	510	35.86	1010	71.01
12	0.84	62	4.36	160	11.25	520	36.56	1020	71.71
13	0.91	63	4.43	165	11.60	530	37.26	1030	72.42
14	0.98	64	4.50	170	11.95	540	37.97	1040	73.12
15	1.05	65	4.57	175	12.30	550	38.67	1050	73.82
16	1.12	66	4.64	180	12.66	560	39.37	1060	74.52
17	1.20	67	4.71	185	13.01	570	40.07	1070	75.23
18	1.27	68	4.78	190	13.36	580	40.78	1080	75.93
19	1.34	69	4.85	195	13.71	590	41.48	1090	76.63
20	1.41	70	4.92	200	14.06	600	42.18	1100	77.34
21	1.48	71	4.99	205	14.41	610	42.89	1120	78.74
22	1.55	72	5.06	210	14.76	620	43.59	1140	80.15
23	1.62	73	5.13	215	15.12	630	44.29	1160	81.56
24	1.69	74	5.20	220	15.47	640	45.00	1180	82.96
25	1.76	75	5.27	225	15.82	650	45.70	1200	84.37
26	1.83	76	5.34	230	16.17	660	46.40	1220	85.77
27	1.90	77	5.41	235	16.52	670	47.11	1240	87.18
28	1.97	78	5.48	240	16.87	680	47.81	1260	88.59
29	2.04	79	5.55	245	17.23	690	48.51	1280	89.99
30	2.11	80	5.62	250	17.58	700	49.21	1300	91.40
31	2.18	81	5.69	255	17.93	710	49.92	1320	92.80
32	2.25	82	5.77	260	18.28	720	50.62	1340	94.21
33	2.32	83	5.84	265	18.63	730	51.32	1360	95.62
34	2.39	84	5.91	270	18.98	740	52.03	1380	97.02
35	2.46	85	5.98	275	19.33	750	52.73	1400	98.43
36	2.53	86	6.05	280	19.69	760	53.43	1420	99.84
37	2.60	87	6.12	285	20.04	770	54.14	1440	101.24
38	2.67	88	6.19	290	20.39	780	54.84	1460	102.65
39	2.74	89	6.26	295	20.74	790	55.54	1480	104.05
40	2.81	90	6.33	300	21.09	800	56.25	1500	105.46
41	2.88	91	6.40	310	21.80	810	56.95	1520	106.87
42	2.95	92	6.47	320	22.50	820	57.65	1540	108.27
43	3.02	93	6.54	330	23.20	830	58.35	1560	109.68
44	3.09	94	6.61	340	23.90	840	59.06	1580	111.09
45	3.16	95	6.68	350	24.61	850	59.76	1600	112.49
46	3.23	96	6.75	360	25.31	860	60.46	1620	113.90
47	3.30	97	6.82	370	26.01	870	61.17	1640	115.30
48	3.37	98	6.89	380	26.72	880	61.87	1660	116.71
49	3.45	99	6.96	390	27.42	890	62.57	1680	118.12
50	3.52	100	7.03	400	28.12	900	63.28	1700	119.52



压力换算表

Bar→kgf/cm²(1Bar=1.019716kgf/cm²)

1 ~ 50		51 ~ 100		105 ~ 350		355 ~ 600		605 ~ 850	
Bar	kgf/cm ²	Bar	kgf/cm ²	Bar	kgf/cm ²	Bar	kgf/cm ²	Bar	kgf/cm ²
1	1.0197	51	52.006	105	107.07	355	362.00	605	616.93
2	2.0394	52	53.025	110	112.17	360	367.10	610	622.03
3	3.0591	53	54.045	115	117.27	365	372.20	615	627.13
4	4.0789	54	55.065	120	122.37	370	377.29	620	632.22
5	5.0986	55	56.084	125	127.46	375	382.39	625	637.32
6	6.1183	56	57.104	130	132.56	380	387.49	630	642.42
7	7.1380	57	58.124	135	137.66	385	392.59	635	647.52
8	8.1577	58	59.144	140	142.76	390	397.69	640	652.62
9	9.1774	59	60.163	145	147.86	395	402.79	645	657.72
10	10.197	60	61.183	150	152.96	400	407.89	650	662.82
11	11.217	61	62.203	155	158.06	405	412.98	655	667.91
12	12.237	62	63.222	160	163.15	410	418.08	660	673.01
13	13.256	63	64.242	165	168.25	415	423.18	665	678.11
14	14.276	64	65.262	170	173.35	420	428.28	670	683.21
15	15.296	65	66.282	175	178.45	425	433.38	675	688.31
16	16.315	66	67.301	180	183.55	430	438.48	680	693.41
17	17.335	67	68.321	185	188.65	435	443.58	685	698.51
18	18.355	68	69.341	190	193.75	440	448.68	690	703.60
19	19.375	69	70.360	195	198.84	445	453.77	695	708.70
20	20.394	70	71.380	200	203.94	450	458.87	700	713.80
21	21.414	71	72.400	205	209.04	455	463.97	705	718.90
22	22.434	72	73.420	210	214.14	460	469.07	710	724.00
23	23.453	73	74.439	215	219.24	465	474.17	715	729.10
24	24.473	74	75.459	220	224.34	470	479.27	720	734.20
25	25.493	75	76.479	225	229.44	475	484.37	725	739.29
26	26.513	76	77.498	230	234.53	480	489.46	730	744.39
27	27.532	77	78.518	235	239.63	485	494.56	735	749.49
28	28.552	78	79.538	240	244.73	490	499.66	740	754.59
29	29.572	79	80.558	245	249.83	495	504.76	745	759.69
30	30.591	80	81.577	250	254.93	500	509.86	750	764.79
31	31.611	81	82.597	255	260.03	505	514.96	755	769.89
32	32.631	82	83.617	260	265.13	510	520.06	760	774.98
33	33.651	83	84.636	265	270.22	515	525.15	765	780.08
34	34.670	84	85.656	270	275.32	520	530.25	770	785.18
35	35.690	85	86.676	275	280.42	525	535.35	775	790.28
36	36.710	86	87.696	280	285.52	530	540.45	780	795.38
37	37.729	87	88.715	285	290.62	535	545.55	785	800.48
38	38.749	88	89.735	290	295.72	540	550.65	790	805.58
39	39.769	89	90.755	295	300.82	545	555.75	795	810.67
40	40.789	90	91.774	300	305.91	550	560.84	800	815.77
41	41.808	91	92.794	305	311.01	555	565.94	805	820.87
42	42.828	92	93.814	310	316.11	560	571.04	810	825.97
43	43.848	93	94.834	315	321.21	565	576.14	815	831.07
44	44.868	94	95.853	320	326.31	570	581.24	820	836.17
45	45.887	95	96.873	325	331.41	575	586.34	825	841.27
46	46.907	96	97.892	330	336.51	580	591.44	830	846.36
47	47.927	97	98.912	335	341.60	585	596.53	835	851.46
48	48.946	98	99.932	340	346.70	590	601.63	840	856.56
49	49.966	99	100.95	345	351.80	595	606.73	845	861.66
50	50.986	100	101.97	350	356.90	600	611.83	850	866.76